

THEATER LOCATION:

501 West Main St. Louisville, KY 40202-2989

MAIN ADMINISTRATION

Ph.: 502-562-0100 Fax: 502-562-0105

CENTER STAFF

President: Stephen Klein 502-562-0112

Facility Rental: Vickie Dorsey 502-562-0177

Operations: Joe Massey 502-562-0103

Front-of-House: Debbie Pennell 502-562-0198

Access Services: Martha Newman 502-562-0711

Production Services: Steve Woodring 502-562-0115

THEATER STAFF

Production Manager: Keith Kimmel 502-562-0173

Technical Director: Noelle Shotwell 502-562-0136

Audio Manager: David Doukas 502-562-0701

Production FAX: 502-562-0758

TICKETING

Ticketing Director: Michelle Veit 502-562-0748

SEATING CAPACITY

TOTAL: 619



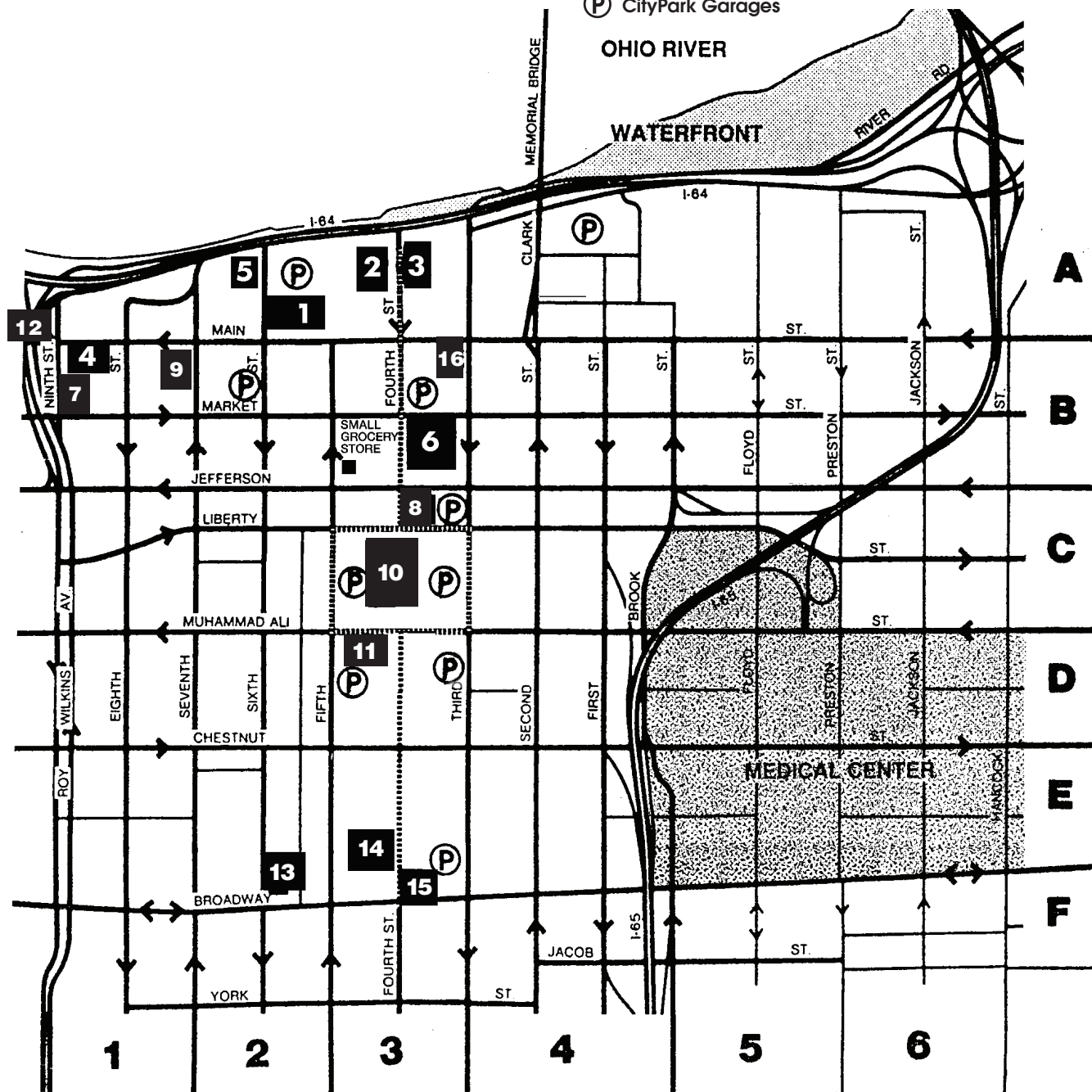


Downtown Louisville, Kentucky

- The Kentucky Center** – 501 W. Main St..... 1
- The Galt House** – 140 N. Fourth St..... 2
- The Galt House East** – 141 N. Fourth St..... 3
- Louisville Slugger Museum and Factory** – 800 West Main St..... 4
- Muhammad Ali Center** – 144 N. Sixth St. 5
- Commonwealth Convention Center** – 221 S. Fourth St..... 6
- Glassworks** – 815 W. Market St..... 7
- Hyatt Regency Louisville** – 320 W. Jefferson St..... 8

- 21c Museum Hotel** – 700 W. Main Street..... 9
- 4th Street Live!** – Fourth between Liberty & Muhammad Ali. 10
- The Seelbach** – 500 S. Fourth Ave..... 11
- Frazier International History Museum** – 829 W. Main St..... 12
- The Courier-Journal** – 525 W. Broadway..... 13
- Theater Square** – Fourth & Broadway..... 14
- The Brown Hotel** – 675 S. Fourth Ave..... 15
- Actors Theatre of Louisville** – 316 W. Main St. 16

(P) CityPark Garages





STAGEHOUSE

FLY SYSTEM:

House Curtain:

- Operates, as guillotine only, from SR fly floor

Rigging System:

- Line sets: 26 total, see attached roster

Type: Single purchase counterweight, T-rail

- Weight: 10,000+ lbs. available
- Arbors: 2000 lbs. maximum
- House Pipes: 40' long, and are capable of clearing 42' from the deck.
- Linesets are not moveable.
- Blockandfalls are available: 1 @ 2:2

PERMANENT INSTALLATIONS

OVER STAGE:

- Over Stage (all demensions are from smoke pocket)
- Electric Raceways: (4) at 2'0", 9'0", 12'0", 17'0"
Show Drop (1) at 14'0"
- Movie Screen (1) at 3'6"
- Onstage: None. Small onstage crossover is available US of last lineset.

BACKSTAGE

ORCHESTRA PIT

- Pit lift is in two sections.
- Adjustable to 14' below stage level.
- Rack and pinion lift.

LOADING DOCK:

- Loading Door: 8'-7"H x 8'-10"W
- Trucks: (1) 24' Box Truck.
- Loading Dock: Door is at truck level; truck slopes away from dock.
- Security: 24/7 security at Stage Door opposite loading dock

WARDROBE

- Access: Opposite side of building.
- Facilities: 3 Washers and 3 Dryers with additional hookups available. Limited access.
- Racks: 6 rolling racks @ 6' each

DRESSING ROOMS

All dressing rooms located SR.

- Star Room: 1 – Sink, toilet, and shower included
- Chorus Rooms: 2 – (10 people each.) Sinks, toilets, and showers included

Also available are 2 locker rooms at pit level often used for musicians. Sinks, toilets, and shower included, but no counter space.

STORAGE AND REHEARSAL AREAS

- Storage Space: Various sizes and locations.
- Rehearsal Space: Various sizes located frontofhouse.

ELECTRICS

ROAD SERVICE POWER: All panels fuse protected per phase.

Panel	Phase	Amp	Typical Use	Location
A	3	600	Dimmers	DSR wall in wing
B	3	600	Dimmers	DSR wall in wing
C	1	50	Audio (Isolated Ground)	DSL wing wall

Additional 2-200 amps 3-phase panels are available on loading dock.

FRONT-OF-HOUSE: (Box Boom values are per side)

Position	House Circuits	Connector Type
Catwalks	181	20A stage pin
Box Boom 1	12	20A stage pin
Boom Box 2	12	20A stage pin

All FOH circuits may be broken individually at the FOH intercept cabinet DSR. Circuit terminations are 20A stage pin.

FOLLOWSPOTS: (2) IN CONTROL BOOTH

Type: Lycian 1272 follow spots, 1.2 kw hmi

ONSTAGE ELECTRICS: System consists of approximately 225 2.4k dimmers distributed in a dimmer-per-circuit system consisting of overhead raceways, drop-boxes, and floor pockets. For locations of the raceways, please refer to the PERMANENT INSTALLATION listing in the Stagehouse section.

Following is an approximate list of available fixtures. Ellipsoidals are 750 w Source Fours

24 @ 10° S4	40 - 2K Fresnel
24 @ 14° S4	30 - S4 Pars with Assorted Lenses
60 @ 19° S4	20 - Ianiro 1500w CYC Units
70 @ 26° S4	4 - 5K Fresnels
40 @ 36° S4	12 - 1K Mini 10's

All fixtures have necessary accessories to include gel frames, safety cables, template holders.

LIGHTING CONTROL:

ETC ION in Control Booth





SOUND

Front of house mix locations: control room or rear of house, house right

FRONT OF HOUSE

- Console:** Midas Heritage 1000 with 42 mono inputs, six stereo inputs.
- Equalization:** TC Electronic EQ Station, 8 Channels
- Compression:** DBX
- Parametric:** DBX
- Noise gates:** Aphex
- Effects:** Lexicon LXP 1, Lexicon LXP 5, Lexicon PCM 91, Lexicon PCM 81, Lexicon LPX 15, TC Electronic D2
- Playback:** Denon DNC680 CD Player w/RC680 remote control, Tascam cassette recorder w/remote Alesis Masterlink 9800 CD recorder

Speaker system

- Left and Right Arrays: (2) Meyer Sound M1D Sub per side, (6) Meyer Sound M1D Curvilinear Line Array Loudspeaker per side
- Front Fill: (3) Meyer Sound M1D Curvilinear Line Array Loudspeaker
- Processor: (1) Meyer Sound Galileo 616

MONITOR SYSTEM

- Console:** Midas Heritage 3000 with 44 mono inputs and 4 stereo inputs
- Equalization:** TC Electronic EQ Station, 8 Channels
- Monitors:** (11) Meyer Sound USM-1P
(4) Meyer Sound USM-100P
(2) Meyer Sound MTS-4A

Monitor Processing:

(1) TC Electronic M2000, (2) DBX 166, (2) DBX 1066

Microphones: Assorted professional wired and wireless microphones available.

CONTROL ROOM

- Console:** Mackie 1604 VLZ Pro
- Intercom:** Clear Com, 2-channel with assorted headsets and belt packs. All headsets are single muff.
- Paging:** Dressing room paging available from control room.
- Assisted Listening:** Sennheiser infrared sound reinforcement system.

Closed-captioning sign for the hearing impaired.

Audio Description system for the visually impaired.

POWER

Company switch: A single 120/208v, 3-phase 5-wire disconnect is provided downstage left approximately ten feet off stage.

All sound system power originates from a dedicated transformer with an isolated earth ground.

CONVENIENCE: (2) 20 amp receptacles stage right, (2) 20 amp receptacles upstage center, (6) 20 amp receptacles stage left, (2) 20 amp receptacles front of house, (2) 20 amp receptacles control room, Convenience receptacles are used to power the house sound system.



501 West Main Street
Louisville, KY 40202-2989

www.kentuckycenter.org

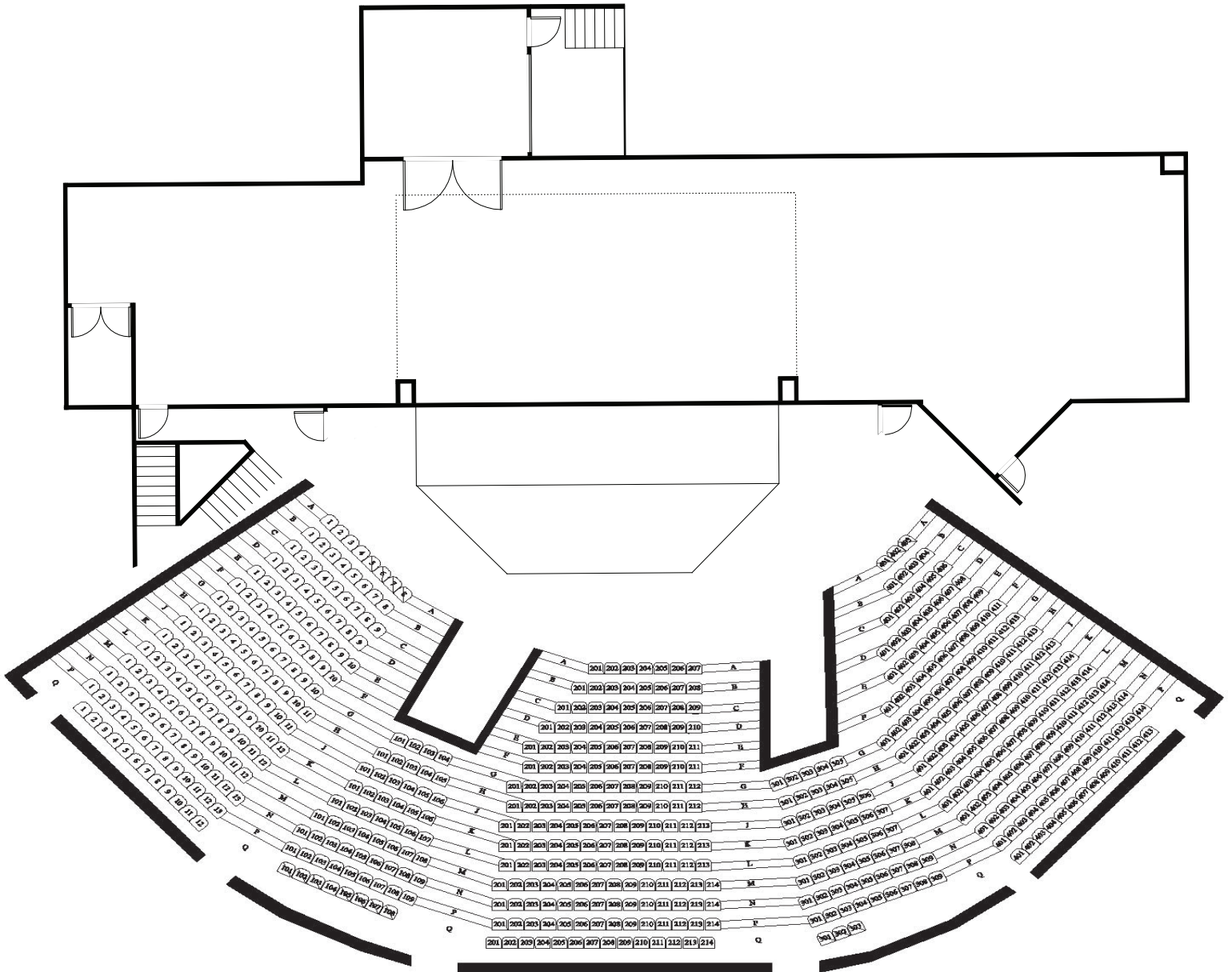




LINE ROSTER

LINESSET NUMBER	DISTANCE FROM PROSCENIUM	SHOW ASSIGNMENT	TRIM HEIGHT	NOTES
0	0'-0"	Fire Curtain		
1	0'-6"	Main/Teaser		
2	1'-0"			
3	1'-6"	SL Tormentor		
4	2'-0"	#1 Electric		
5	2'-6"			
6	3'-0"			
7	3'-6"	Movie Screen		
8	4'-0"			
9	4'-6"			
10	5'-0"			
11	5'-6"			
12	6'-0"			
13		NO PIPE		
14	7'-0"			
15	7'-6"			
16	8'-0"			
17		NO PIPE		
18	9'-0"	#2 Electric		
19	7'-6"	NO PIPE		
20	10'-0"	Traveler		
21	10'-6"			
22	11'-0"			
23		NO PIPE		
24	12'-0"	#3 Electric		
25		NO PIPE		
26	13'-0"			
27	13'-6"			Fouls on LPS Drop
28	14'-0"	LPS Backdrop		
29		NO PIPE		
30	15'-0"			
31	15'-6"			Fouls on #4 Electric
32	16'-0"	#4 Electric		
33		NO PIPE		
34	17'-0"	US Black Drape		
35	17'-6"	Cyclorama		Stretched on hard frame

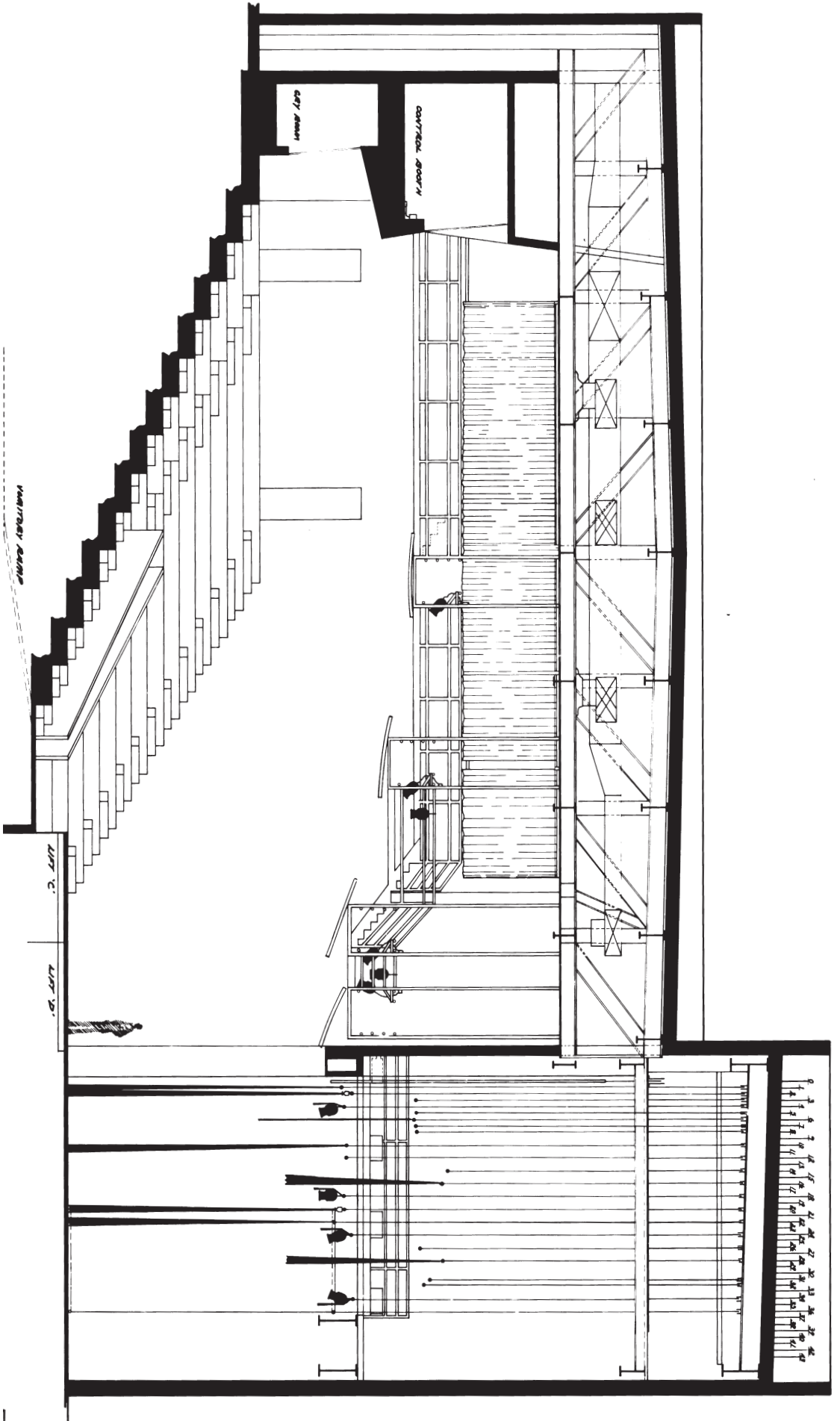




Wheelchair accessible seating is available.

NOT TO SCALE:
Drawn for dimensional
purposes only





SIDE VIEW

